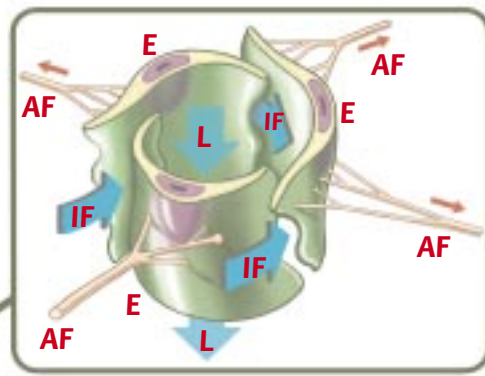
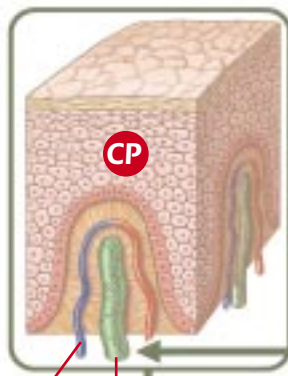


The Lymph Drainage System

Simplified diagram of the most important anatomical areas

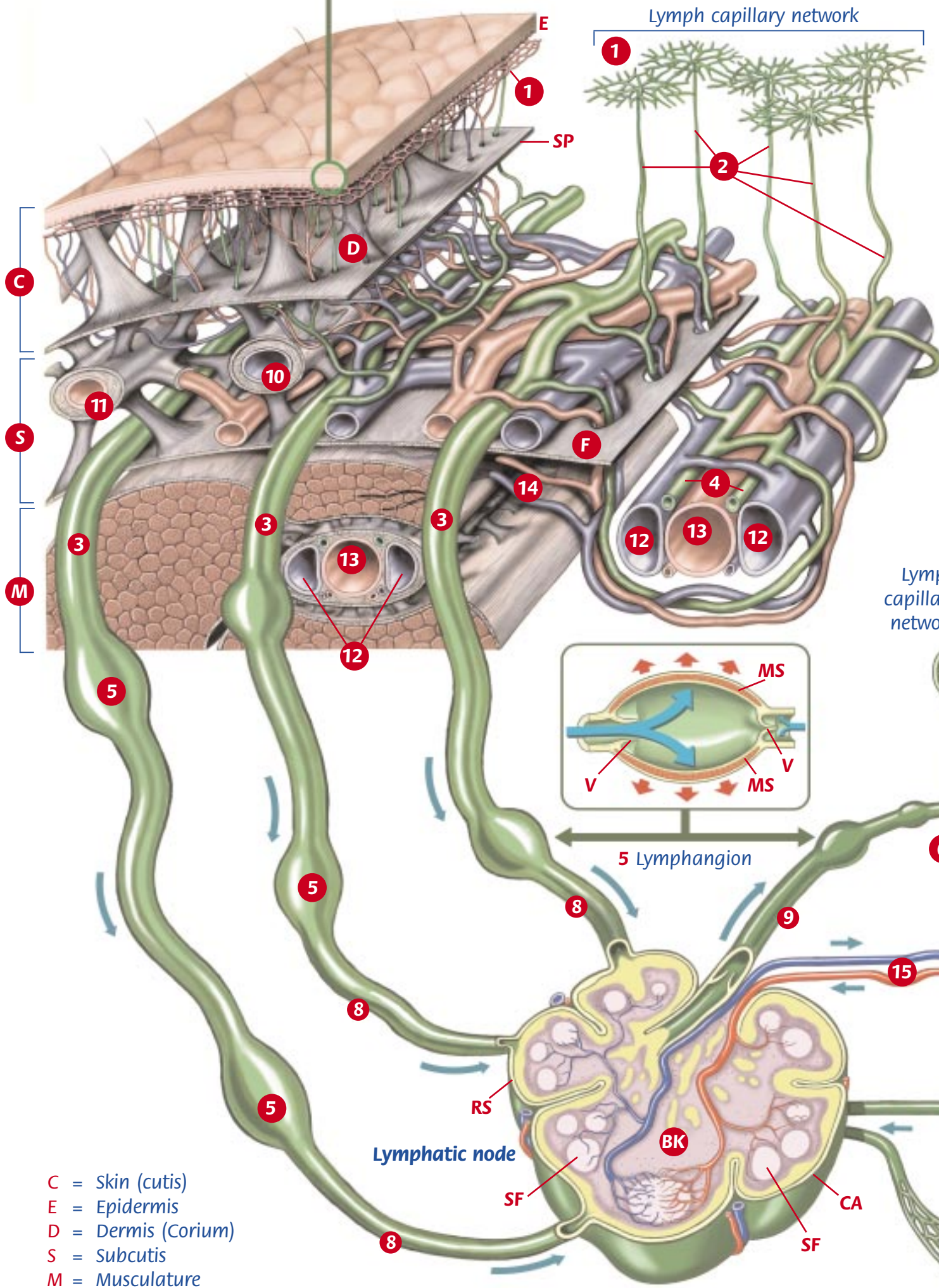
Epidermis with blood capillary loop and an initial lymph vessel (Magnification)

BK = Blood capillary
IL = Initial lymph vessel
CP = Corium papilla



Initial lymph vessel
Phase of opening

E = Endothelial cells
AF = Anchor filaments
IF = Inflow of interstitial fluid
L = Outflow direction of lymph



Lymph vessels (green)

- 1 Lymph capillary (initial lymph vessel)
- 2 Precollector
- 3 Lymph collector (lymphatic ducts)
- 4 Deep lymph vessels
- 5 Lymphangion
- 6 Lymphatic trunk
- 7 Confluence (junction) of the lymphatic trunks in the veins
- 8 Afferent lymph vessel
- 9 Efferent lymph vessel

Blood Vessels (veins = blue, arteries = red)

- 10 Superficial vein
- 11 Superficial artery
- 12 Deep veins
- 13 Deep artery
- 14 Blood vessels of the musculature
- 15 Blood vessels of the lymph node

C = Skin (cutis)
E = Epidermis
D = Dermis (Corium)
S = Subcutis
M = Musculature
F = Body fascia
SP = Subcutaneous pseudofascia

Lymphangion (longitudinal section) Phase of filling
Green arrow = inflow of lymph

V = Lymphatic valves (left = open, right = closed)
MS = Muscle layer

Lymphatic node (section)

CA = Capsule
RS = Marginal sinus
SF = Secondary follicle
BK = Blood capillary network of the lymph node
8 Afferent lymph vessel
9 Efferent lymph vessel
15 Blood vessels of the lymph node

