

CONTINUUM OF CARE WITH NIGHTTIME COMPRESSION GARMENTS

HELPING PATIENTS MANAGE LYMPHEDEMA INDEPENDENTLY

Patients with lymphedema may experience fluctuations in swelling overnight, which are associated with discomfort and restless sleep. While compression bandages represent an effective solution to manage edema during the night, self-bandaging requires practice and can be demanding for some patients.

Easy to don and care for, JOBST® JoViPak® garments help empower patients to more easily gain control over edema at night.



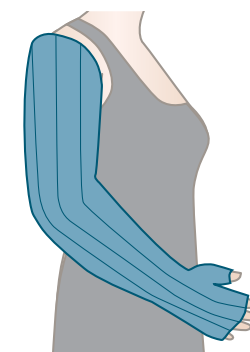
Our JOBST® JoViPak® Classics for Nighttime Compression



JoViJackets:

For extra compression, simply add the JoViJacket over your nighttime garment to optimize results.

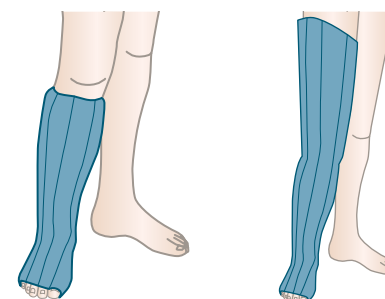
- Available for Arm, Leg, Busti, Shoulder-Torso, Hip-Hugger, and Boxer



Classic Arm Sleeve:

Designed for lymphedema of the arm following mastectomy or lumpectomy. It encourages lymph drainage to alternate functional pathways.

- Contoured arm sleeve
- Added comfort through anatomically-positioned thumb stub and anticubital dart
- Available in Custom Made in a variety of styles and colors and with optional zipper
- Also available in Ready-to-Wear



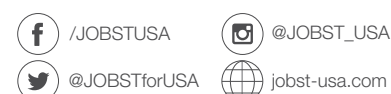
Classic Lower and Full Leg

These garments are suggested for lower / full leg lymphedema or edema and encourage effective lymph drainage.

- Standard version: top of toes exposed
- Available in Custom Made in a variety of styles and colors and with optional zipper
- Also available in Ready-to-Wear

Lycra® is a registered trademark of Invista. Polartec® and Power Dry® are registered trademarks of Polartec®, LLC. Velcro® is a registered trademark of Velcro BVBA.

Please refer to the product label and / or package insert for full instructions on the safe use of these products.



BSN medical Inc., an Essity company
5825 Carnegie Blvd., Charlotte, NC 28209-4633
Tel. (+1) 704 554 9933 Fax (+1) 800 835 4325
To order toll-free: Tel. (+1) 800 537 1063
62762 R3 ©2018 BSN medical Inc. REV 10/18



Effective
and
Comfortable
Nighttime Lymphedema Garments



JOBST® JoViPak®

JOBST® & JOVIPAK®

PROVIDE BEST-IN-CLASS THERAPY SOLUTIONS FOR LYMPHEDEMA

The management of lymphedema can be challenging, both for patients and therapists. **BSN medical** offers several customized solutions to meet the individual's needs. Optimal therapeutic results can be achieved from using **JOBST®** medical compression garments, bandages and wraps, and skin and wound care products.

With over 60 years of expertise in compression therapy and its patient-centered philosophy, **JOBST®** products are the gold standard in lymphedema management.

With the integration of **JoViPak®** products into the **JOBST®** portfolio, **JOBST®** is providing additional effective 'tools' to help patients live their lives as independently as possible.

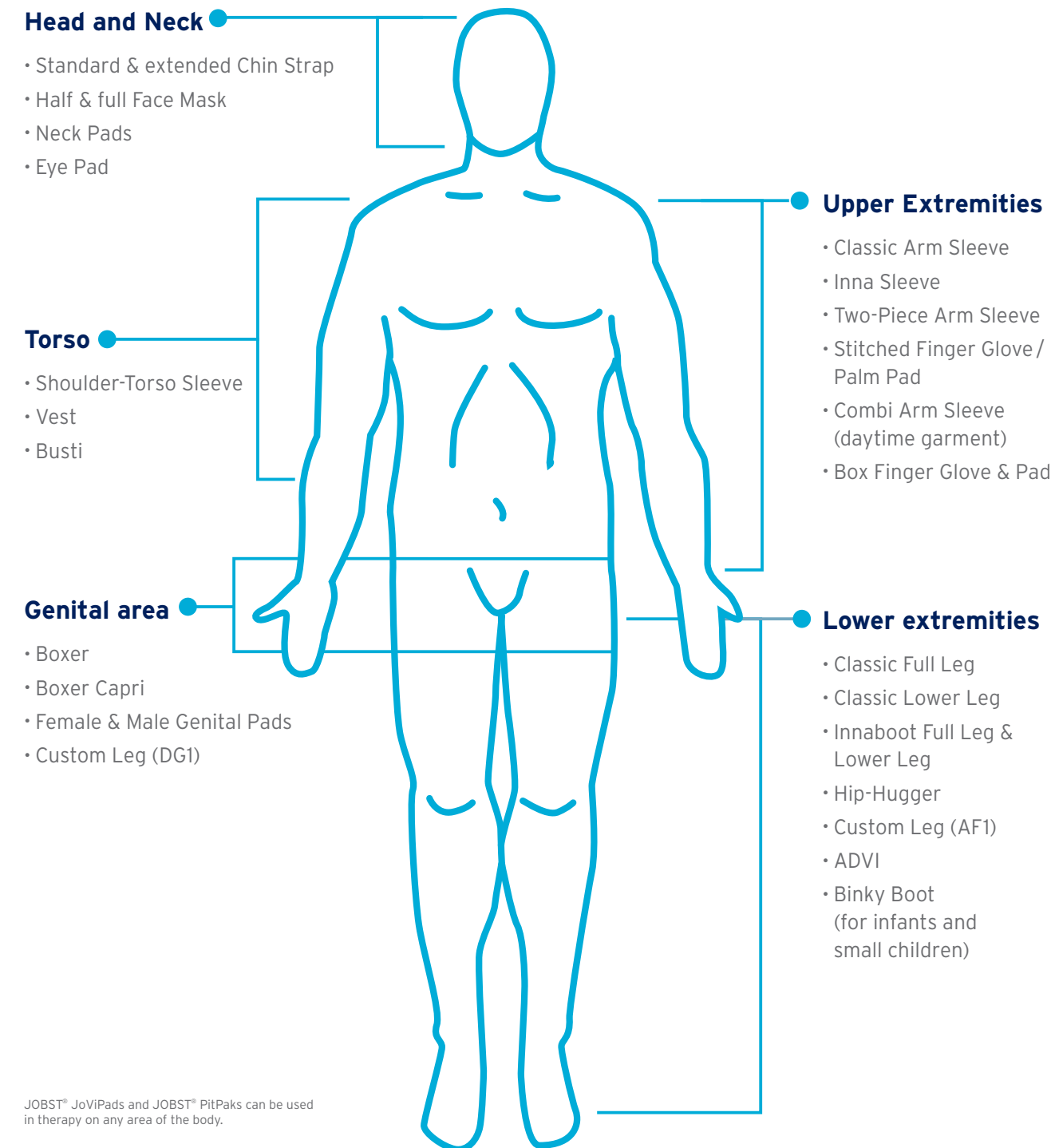
JoViPak® products were developed by renowned lymphedema therapist, educator, and cancer survivor, JoAnn Rovig. They are used in the management of edema and lymphedema, and are complimentary devices used in wound care, post-surgical procedures, and sports therapy for edema.



TOTAL BODY SOLUTIONS

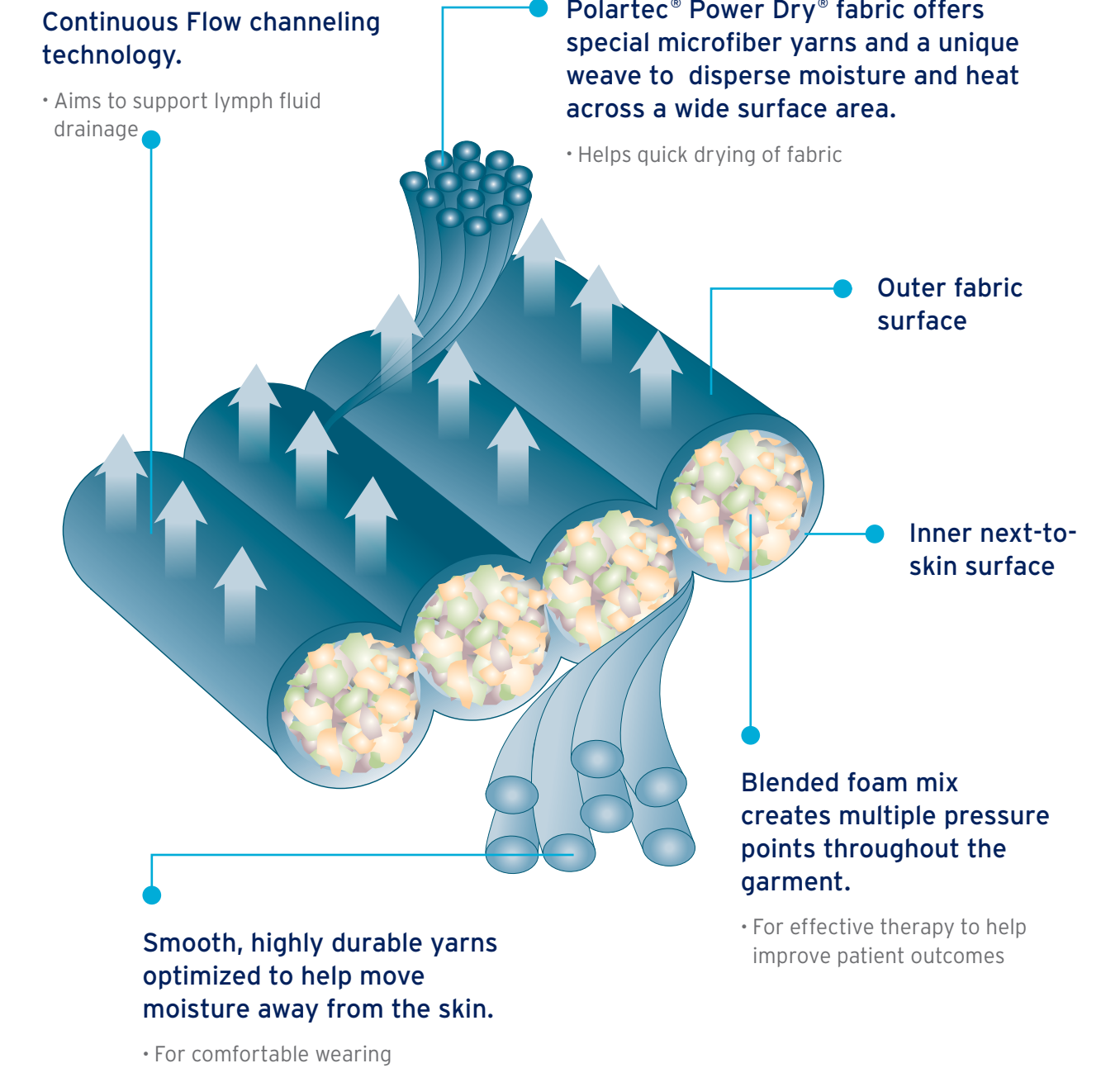
COMPRESSION WHERE YOU NEED IT WITH JOBST® JOVIPAK®

JOBST® JoViPak® garments offer easy-to-use alternatives to nighttime compression bandaging. These foam-filled garments provide pressure into the tissue and, with the recommended **JoViJacket™**, provide additional compression for optimal therapeutic results.



JOBST™ JoViPads and JOBST™ PitPaks can be used in therapy on any area of the body.

UNIQUE FEATURES AND BENEFITS



The **Polartec® Power Dry®** fabric is also available in **silkweight**, a thinner version which is ideal for low profile slimline garments. **Silkweight** is often recommended for patients having donning and doffing issues.

Garments made of **Organic Cotton/Lycra®** may be a better choice for patients with a skin sensitivity to polyester, and for products with Velcro® closures as Velcro® closures will snag the **Polartec® Power Dry®** fabric.