



**JOBST**®

Compression for  
those who love to  
**move  
freely**

**JOBST® Confidence**

The next generation of made-to-measure  
flat-knit compression garments

**NEW  
PANTY  
STYLES**

# JOBST® Confidence



Innovative knitting method allows for high ability to **conform to individual body shapes**



Made with a supple conforming fabric that also gives the reassurance of **firm support**



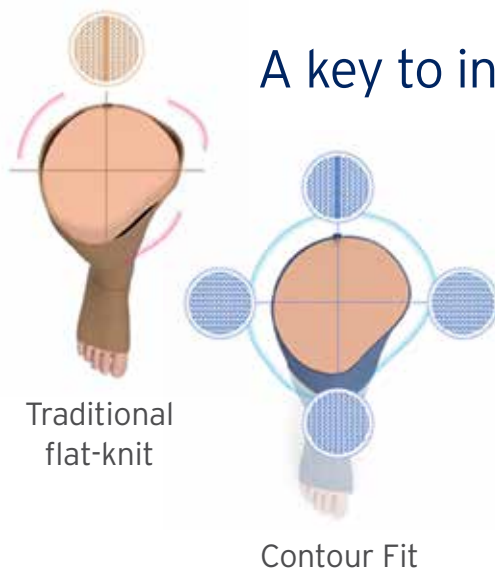
Advanced moisture management system with double-layer construction for **optimal wearing comfort**



# Introducing a **new era of comfort** with **Contour fit** technology

Invite your patients to experience the difference that a personally refined fit can bring to their daily comfort. Developed with Contour Fit technology, these garments are ideal for patients with mild to moderate lymphedema and lipedema\*. They precisely fit the individual anatomical shapes of your patients, giving them greater freedom of movement and comfort in their daily activities.

**INNOVATIVE  
TECHNOLOGY**



## A key to individualized comfort: **Contour fit**

Unlike traditional flat-knit technology, **Contour Fit** works by adapting the fit of the garment at **four positions on the limb** (instead of one) to create a garment that truly contours the unique form of your patient's body.

This results in special Contour Points, that show where the garment has been individually tailored to allow your patients to move more freely.

## Inspired by patient needs and developed with next-generation technology



**"My patients are really pleased about the softness of the material - and at the same time it provides the firm pressure they need"**

**Justine Whitaker** – Director and Nurse Consultant,  
Northern Lymphology, Forest of Bowland, Lancashire, UK

# The innovative new panty design

**NEW**



Our **new panty styles** feature an ergonomic seam placement that better follows the natural shape of **lymphedema and lipedema** patients' bodies. This can help reduce discomfort and restriction in their daily lives.

## Unique fit for unique bodies

For the first time ever, JOBST Confidence is able to provide **a dedicated knitting pattern for both lymphedema and lipedema patients.**

### LIPEDEMA



### LYMPHEDEMA



It starts with your **patients' unique body shape**



### MEASURING

Both patient types **are measured according to our guideline.**



### RECOGNIZING

Our manufacturing system interprets measurements and **recognizes** the body shape as either **lipedema or lymphedema.**



### PRODUCING

A dedicated knitting pattern is selected and the innovative **Contour Fit** knitting technique produces a garment with an even **better personalized fit.**



# Empower your patients with comfort, color and design options

## Comfort options



Functional zone\*



Slant toe

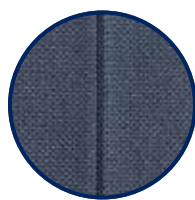


Hallux valgus closed toe



Hallux valgus open toe

## Design options



Deco line



Initials



Floral waistband (5cm)



\*Available for knee, ankle and elbow



# JOBST® Confidence - An assortment for individual needs

## Styles



CG1 Arm sleeve



AD Knee high



AG Thigh high

## New available styles



AT Panty



BT Capri



B1T Capri



ET Bermuda



AB1 Sock

## Compression classes

### Upper limb

CCL 1 ▶ 15 - 21 mmHg

CCL 2 ▶ 23 - 32 mmHg

### Lower limb

CCL 1 ▶ 18 - 21 mmHg

CCL 2 ▶ 23 - 32 mmHg

CCL 3 ▶ 34 - 46 mmHg



JOBST®,  
an Essity brand

Instagram: @JOBST\_USA  
Twitter: @JOBSTforUSA

Facebook: /JOBSTUSA  
Website: eshop.jobst.us

BSN Medical Inc., an Essity company  
5825 Carnegie Blvd., Charlotte NC 28209-4633  
Tel. (+1) 704 554 9933 Fax (+1) 800 835 4325  
To order toll-free Tel (+1) 800 552 1157